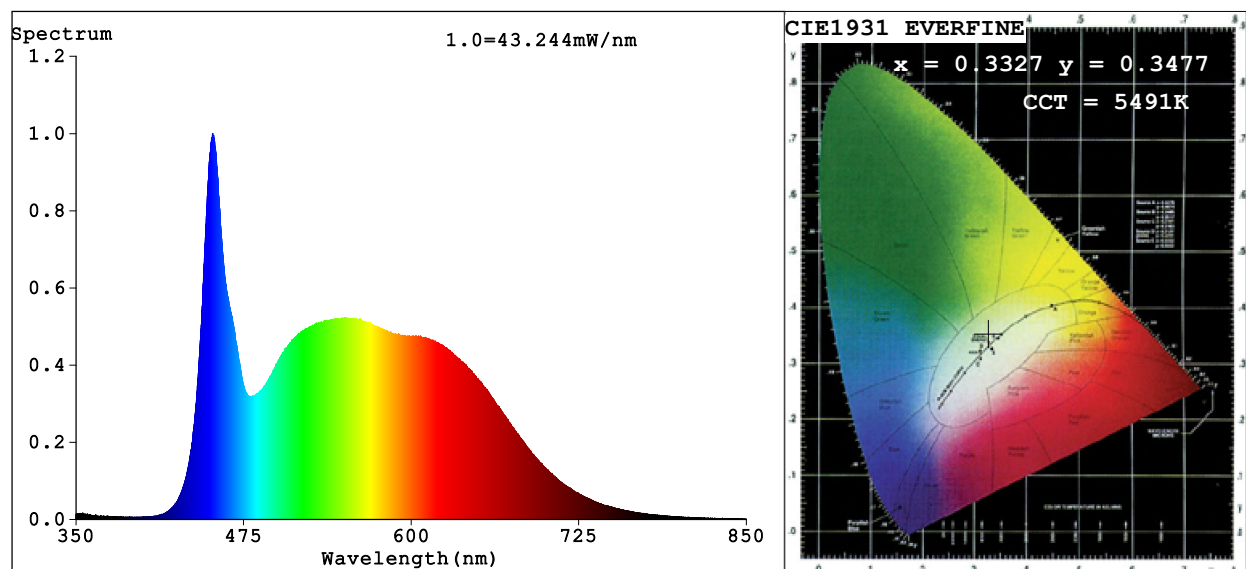


## Spectrum Test Report



### Color Parameters:

Chromaticity Coordinate:  $x=0.3327$   $y=0.3477$   $u'=0.2045$   $v'=0.4809$

CCT=5491K (Duv=0.0032) Dominant WL:Ld =552.3nm Purity=4.2%

Ratio:R=16.1% G=78.2% B=5.7%; Peak WL:Lp=451.9nm FWHM=24.4nm

Render Index:Ra=92.3 CRI=88.6 TM30:Rf=90 Rg=98

R1 =92 R2 =95 R3 =95 R4 =92 R5 =91 R6 =91 R7 =95

R8 =87 R9 =65 R10=87 R11=92 R12=68 R13=93 R14=97 R15=91

### Photo Parameters:

Flux = 1520 lm Eff. : 49.53 lm/W Fe = 5.265 W

### Electrical parameters:

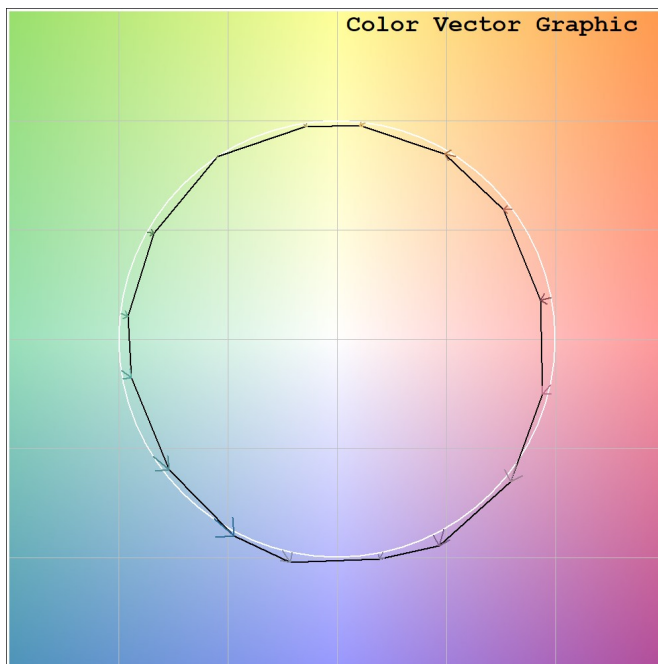
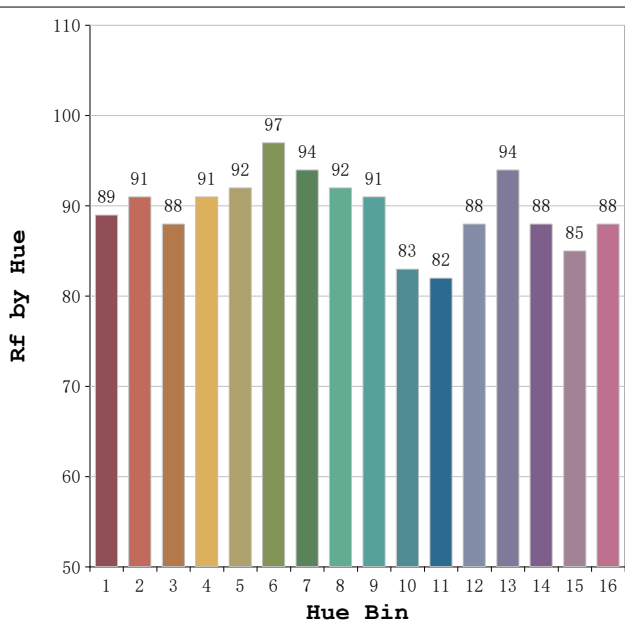
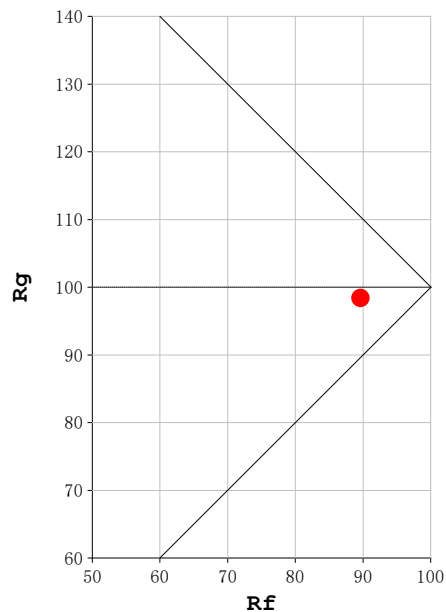
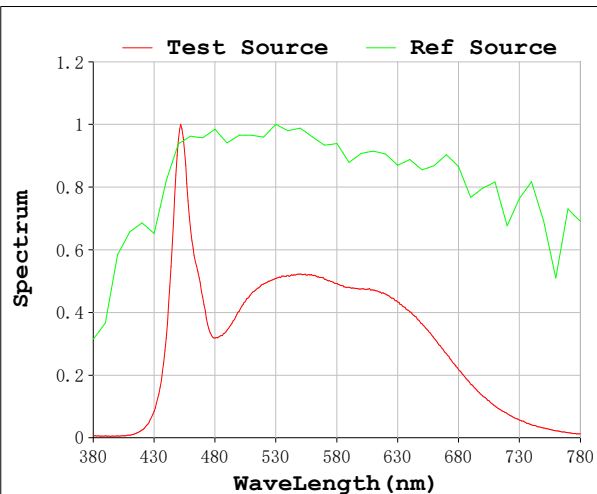
V = 230.07 V I = 0.1393 A P = 30.69 W PF = 0.9571

Status: Integral T = 888 ms Ip = 45041 (69%)

Model:Spotia Zomm CTT negro  
Tester:Sergio Carneros  
Temperature:20Deg  
Manufacturer:Luz Negra

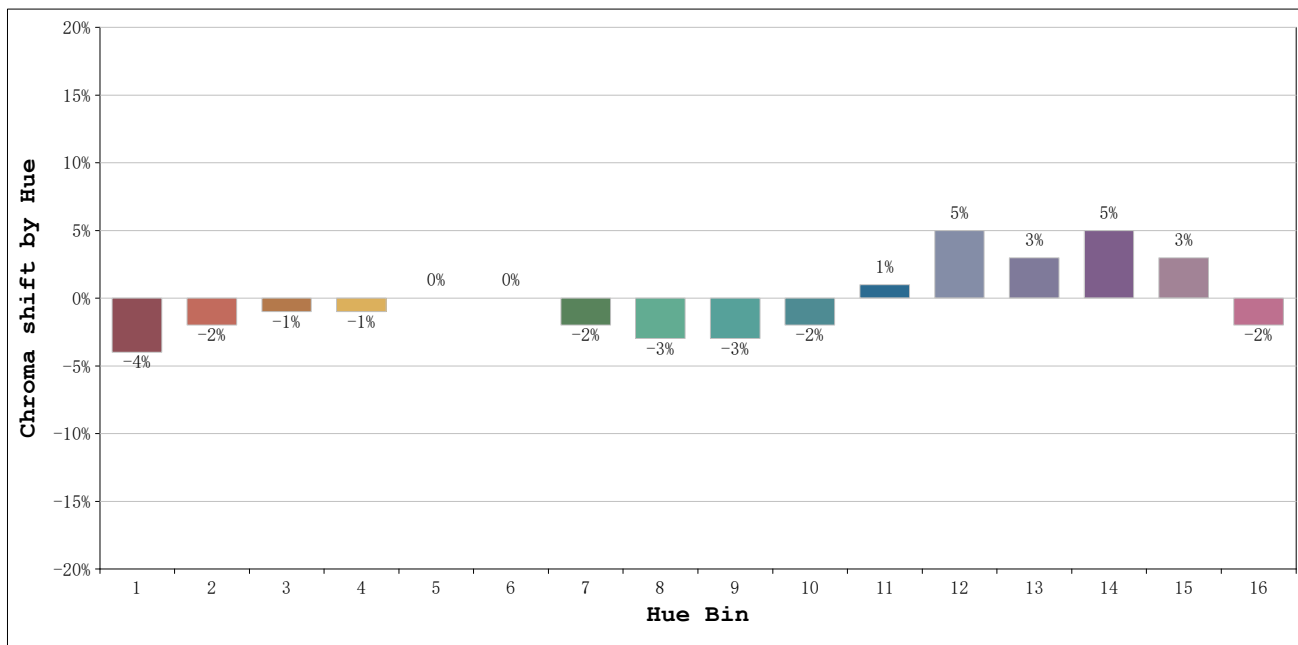
Number:6000k 20° Panal de abeja  
Date:2026-03-23 08:50:46  
Humidity:50%  
Remarks:1 unidad

**Rf: 90**      **CCT: 5491 K**      **u': 0.2045**  
**Rg: 98**      **Duv: 0.0032**      **v': 0.4809**



Model:Spotia Zomm CTT negro  
 Tester:Sergio Carneros  
 Temperature:20Deg  
 Manufacturer:Luz Negra

Number:6000k 20° Panal de abeja  
 Date:2026-03-23 08:50:46  
 Humidity:50%  
 Remarks:1 unidad

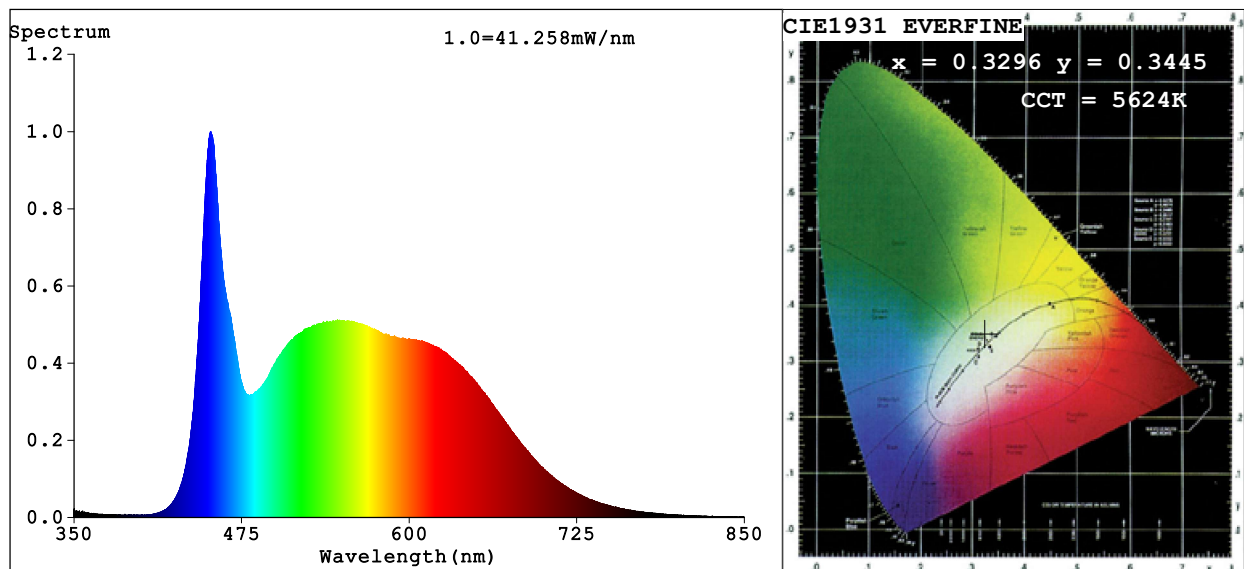


			Graphic shift(%)	
Hue Bin	Hue Angle	Rf	Chroma	Hue
1	0.0° - 22.5°	89	-4	0
2	22.5° - 45.0°	91	-2	2
3	45.0° - 67.5°	88	-1	5
4	67.5° - 90.0°	91	-1	2
5	90.0° - 112.5°	92	0	1
6	112.5° - 135.0°	97	0	0
7	135.0° - 157.5°	94	-2	0
8	157.5° - 180.0°	92	-3	1
9	180.0° - 202.5°	91	-3	4
10	202.5° - 225.0°	83	-2	9
11	225.0° - 247.5°	82	1	12
12	247.5° - 270.0°	88	5	5
13	270.0° - 292.5°	94	3	-1
14	292.5° - 315.0°	88	5	-5
15	315.0° - 337.5°	85	3	-7
16	337.5° - 360.0°	88	-2	-4

Model:Spotia Zomm CTT negro  
 Tester:Sergio Carneros  
 Temperature:20Deg  
 Manufacturer:Luz Negra

Number:6000k 20° Panal de abeja  
 Date:2026-03-23 08:50:46  
 Humidity:50%  
 Remarks:1 unidad

## Spectrum Test Report



### Color Parameters:

Chromaticity Coordinate:  $x=0.3296$   $y=0.3445$   $u'=0.2036$   $v'=0.4789$   
 $CCT=5624K$  (Duv=0.0030) Dominant WL:Ld =533.6nm Purity=2.5%  
 Ratio:R=15.9% G=78.3% B=5.8%; Peak WL:Lp=451.9nm FWHM=24.4nm  
 Render Index:Ra=92.4 CRI=88.7 TM30:Rf=90 Rg=98  
 R1 =92 R2 =95 R3 =95 R4 =92 R5 =91 R6 =91 R7 =95  
 R8 =87 R9 =65 R10=87 R11=92 R12=68 R13=94 R14=97 R15=91

### Photo Parameters:

Flux = 1417 lm Eff. : 46.28 lm/W Fe = 4.919 W

### Electrical parameters:

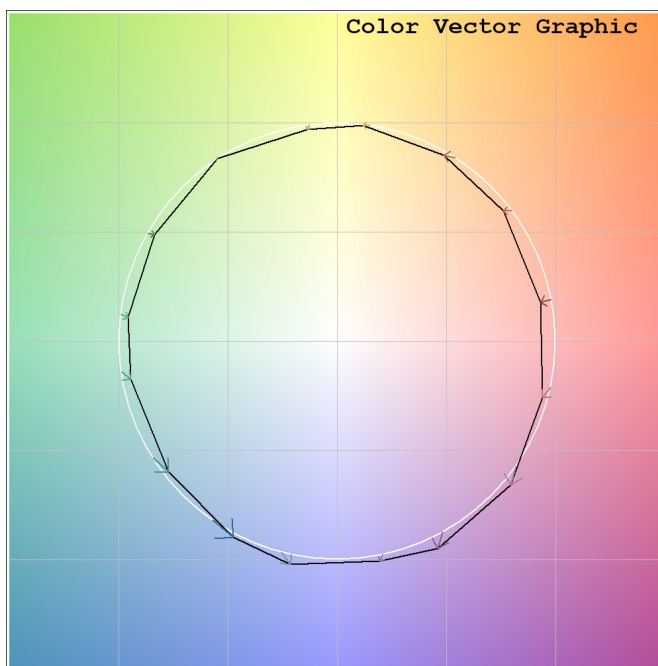
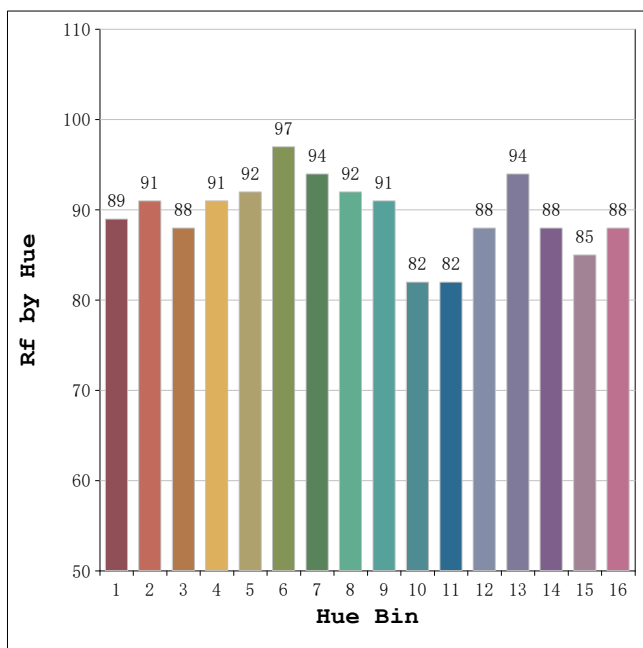
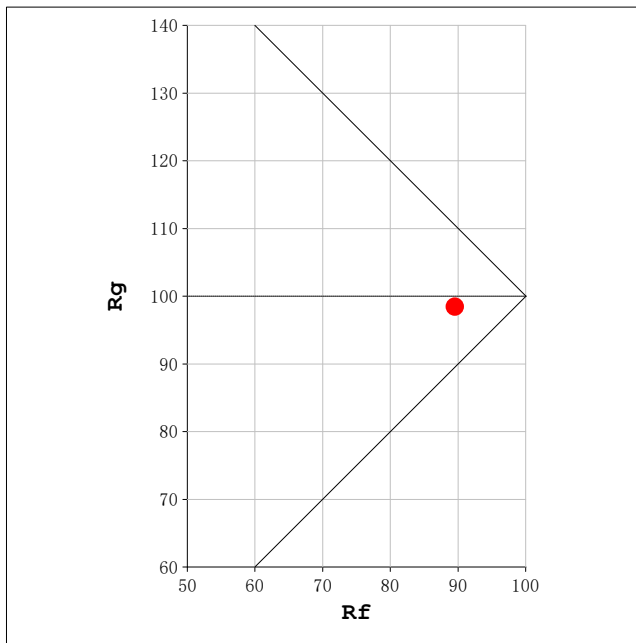
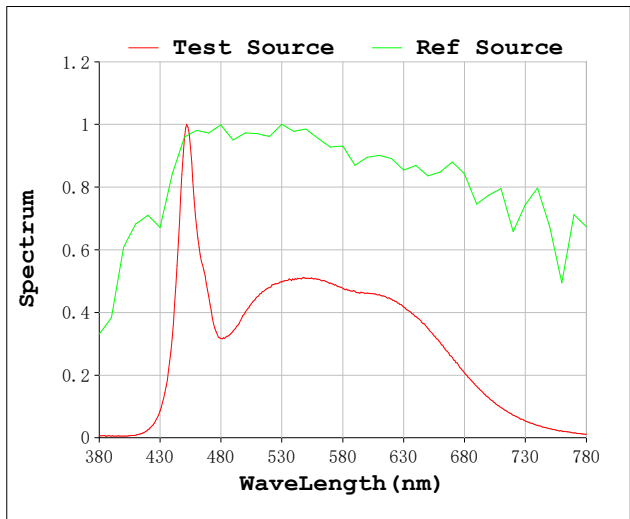
V = 230.09 V I = 0.1390 A P = 30.61 W PF = 0.9570

Status: Integral T = 888 ms Ip = 43069 (66%)

Model:Spotia Zomm CTT negro  
 Tester:Sergio Carneros  
 Temperature:20Deg  
 Manufacturer:Luz Negra

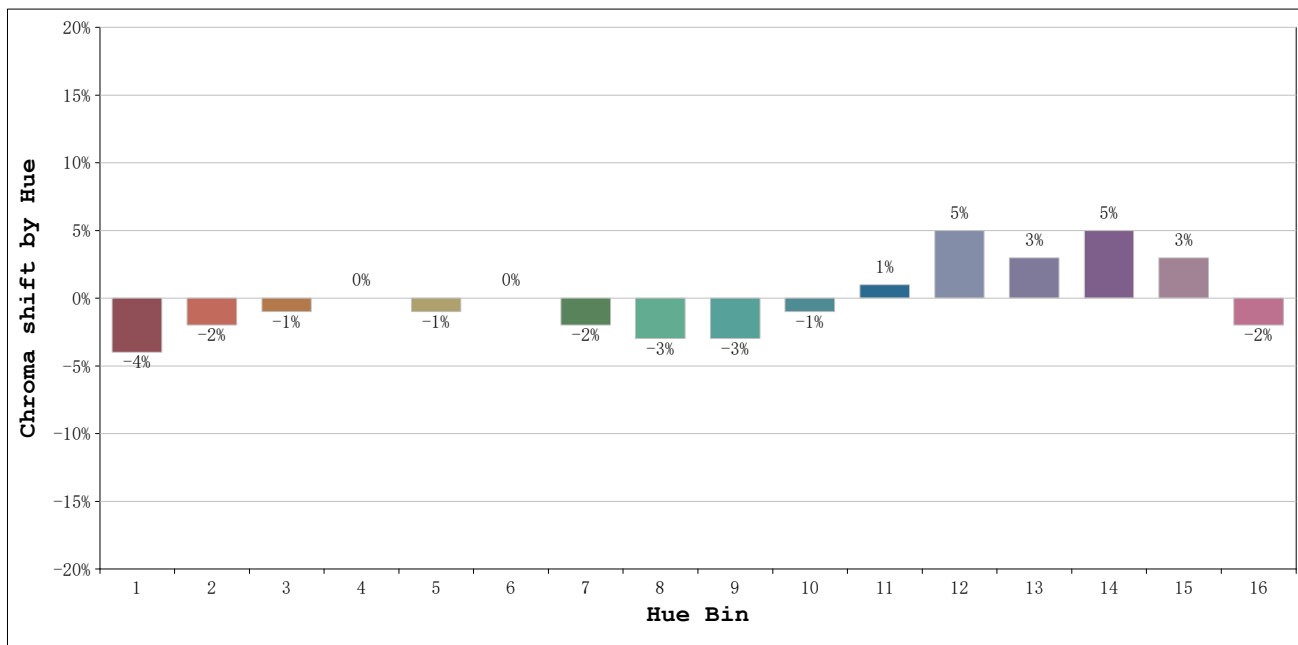
Number:6000k 50° Panal de abeja  
 Date:2026-03-23 08:51:22  
 Humidity:50%  
 Remarks:1 unidad

**Rf: 90**      **CCT: 5624 K**      **u': 0.2036**  
**Rg: 98**      **Duv: 0.0030**      **v': 0.4789**



Model:Spotia Zomm CTT negro  
 Tester:Sergio Carneros  
 Temperature:20Deg  
 Manufacturer:Luz Negra

Number:6000k 50° Panal de abeja  
 Date:2026-03-23 08:51:22  
 Humidity:50%  
 Remarks:1 unidad



			Graphic shift(%)	
Hue Bin	Hue Angle	Rf	Chroma	Hue
1	0.0° - 22.5°	89	-4	0
2	22.5° - 45.0°	91	-2	2
3	45.0° - 67.5°	88	-1	5
4	67.5° - 90.0°	91	0	3
5	90.0° - 112.5°	92	-1	1
6	112.5° - 135.0°	97	0	0
7	135.0° - 157.5°	94	-2	0
8	157.5° - 180.0°	92	-3	1
9	180.0° - 202.5°	91	-3	4
10	202.5° - 225.0°	82	-1	9
11	225.0° - 247.5°	82	1	12
12	247.5° - 270.0°	88	5	5
13	270.0° - 292.5°	94	3	-1
14	292.5° - 315.0°	88	5	-5
15	315.0° - 337.5°	85	3	-7
16	337.5° - 360.0°	88	-2	-4

Model:Spotia Zomm CTT negro  
 Tester:Sergio Carneros  
 Temperature:20Deg  
 Manufacturer:Luz Negra

Number:6000k 50° Panal de abeja  
 Date:2026-03-23 08:51:22  
 Humidity:50%  
 Remarks:1 unidad